



TABLE TOPS COMPACT LAMINATE

Compact laminate table tops are one of the newer entries into the table top market. Introduced only a few years ago, they are stylish and sleek in design and at 13mm thick are approx half the thickness of a standard table top.

These slim line tops can be used both indoors and outdoors and are weatherproof and UV resistant. There are a limited range of sizes and colours for external use but if the Compact tops are to be used internally, there is a massive range of colours and sizes.

- **Commercial quality**
- **Hard wearing and scratch resistant**
- **Heat resistant and easy to clean**
- **Range of colours, shapes and designs**
- **Great price points**

12mm thick table tops suitable for both internal and external use. A highly compressed and dense structure produces a stable, UV resistant, totally weatherproof, heat resistant surface that is easy to care for and hard to scratch.

RANGE A

Available as 50, 60, 70, 80, 90cm Dia

50x50, 60x60, 70x70, 80x80, 90x90cm Square

70x60, 100x60, 110x70, 120x80, 140x70, 140x80, 160x80, 160x90, 200x100cm Rectangular

RANGE B

Available as 69cm Dia

69x69, 79x79cm Square

119x69cm Rectangular



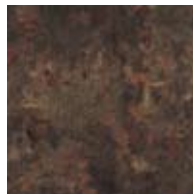
RANGE A



Ponderosa White
CA178



Ponderosa Grey
CA179



Rust Brown
CA223



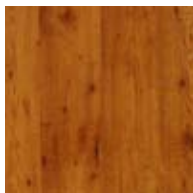
Montpellier
CA214



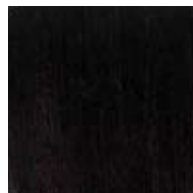
Concrete
CA241



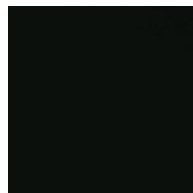
Tarnished Silver
CA224



Pine
CA321



Wenge
CA103



Black
CA055

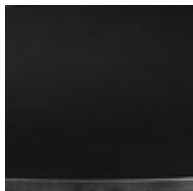


Dark Grey
CA420



Grey
CA171

RANGE B



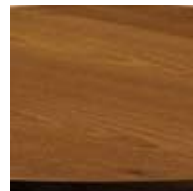
Black
CB122



Anthracite
CB126



Vintage
CB173



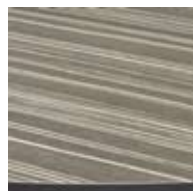
Wood
CB192



Marble
CB195



Aged Wood
CB181



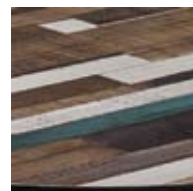
Zebrano
CB124



Cool Cement
CB177



White
CB463



Drift Wood
CB459